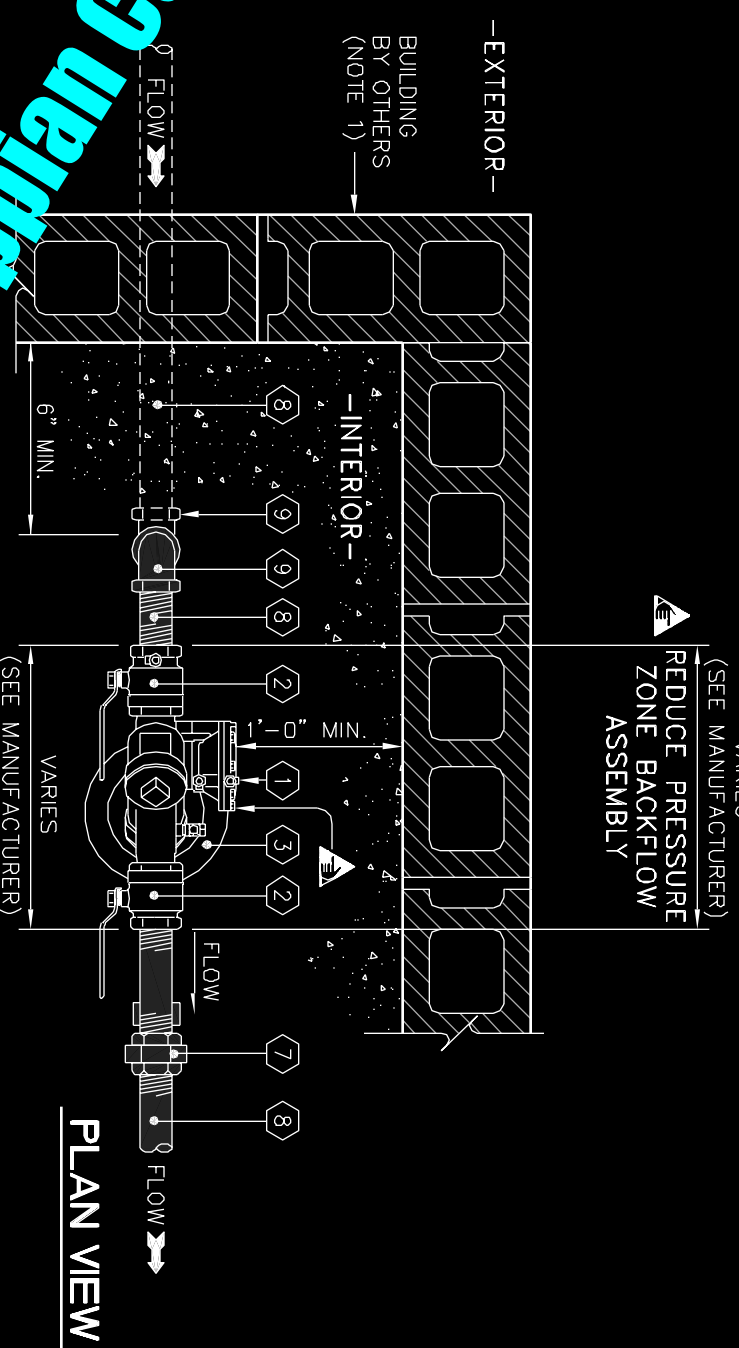
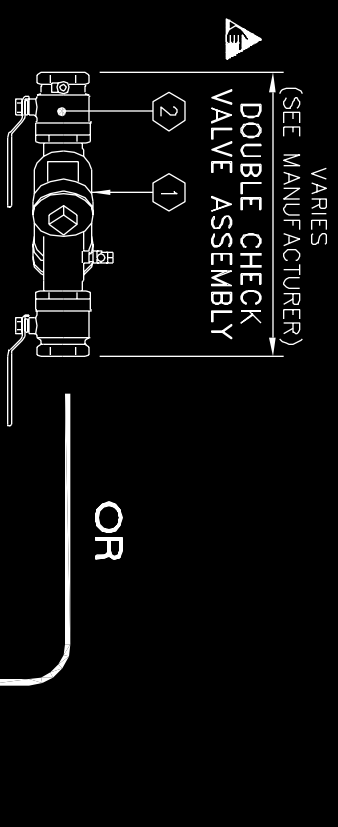


NOTES:

1. Backflow assembly is to be installed in an accessible portion of outside of building. Backflow is not part of CITY system.
2. Two pipe stands required for 1 1/2" and 2" backflow preventers.
3. Provide minimum 1" annular clearance around all risers and electrical conduit.

3/4" to 2" DCV, RPZ ASSEMBLY (INDOOR)

Anjan Consulting Engineers



#	PART	MANUFACTURER MODEL / Cat. No.
1	BACKFLOW PREVENTION ASSEMBLY, AS APPLICABLE	SEE SPECS. 02900 - PRODUCTS
2	1/4" TURN FULL PORT BRONZE BALL SHUT-OFF VALVE	MILLER SUPPLY Co. / DC-590
3	FLOOR DRAIN	JAY R. SMITH MFG. CO. / 2005
4	4" DIP CLASS 350 OR PVC SCH 40 PIPE	---
5	4" DIP CLASS 350 OR PVC SCH 40 ELBOW	---
6	ADJUSTABLE PIPE SUPPORTS TO BE SHOP FABRICATED AND HOT DIP GALVANIZED.	STANDON / MODEL S92 SADDLE SUPPORT OR EQUAL
7	THREADED UNION	---
8	3/4" THRU 2" STAINLESS STEEL OR BRASS THREADED PIPE	---
9	90° BRASS ELBOW	---

3/4" to 2" DCV, RPZ ASSEMBLY (INDOOR)