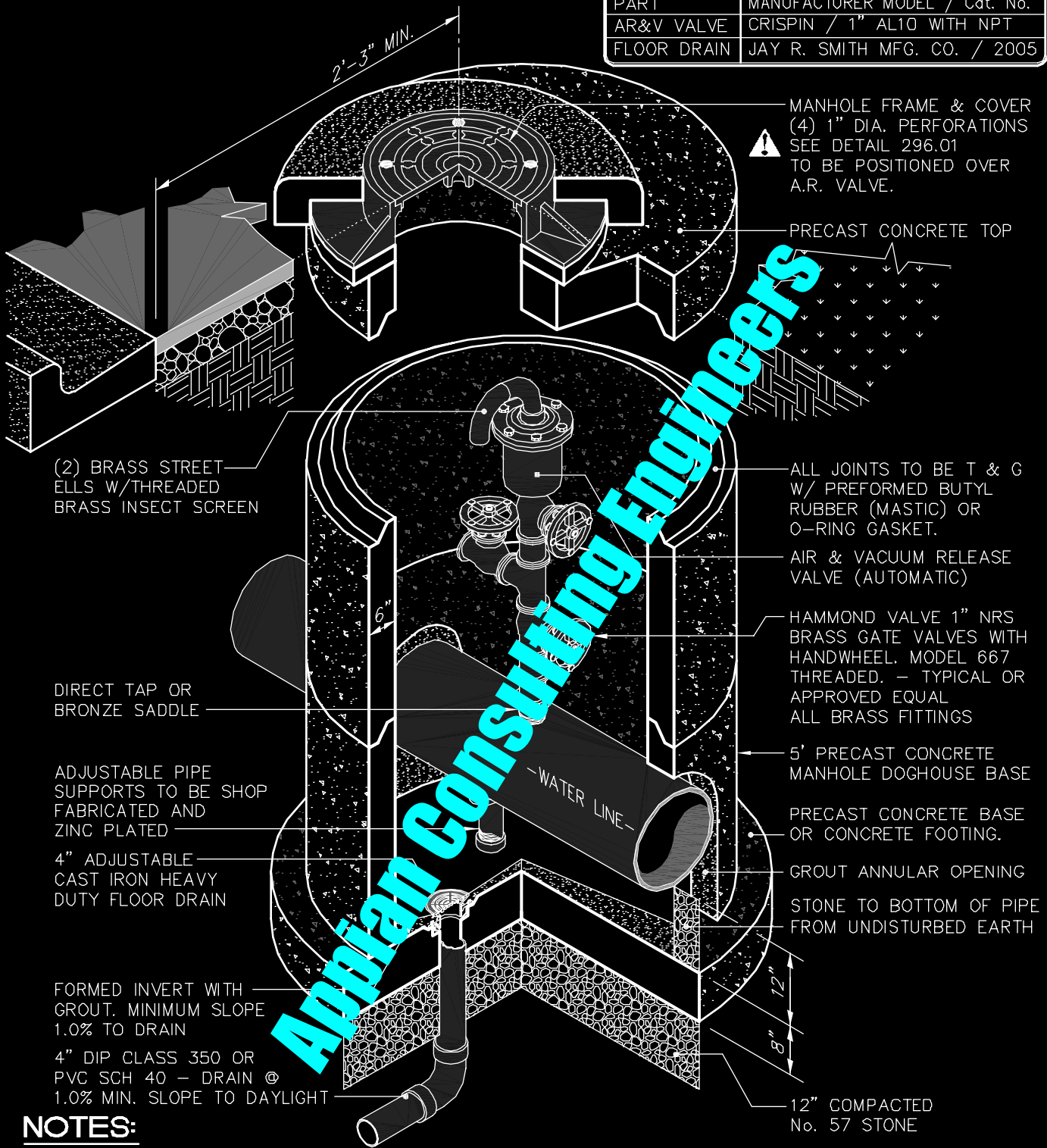


PART	MANUFACTURER MODEL / Cat. No.
AR&V VALVE	CRISPIN / 1" AL10 WITH NPT
FLOOR DRAIN	JAY R. SMITH MFG. CO. / 2005



**NOTES:**

1. Provide a minimum of 3'-6" cover over water line.
2. Do not exceed allowable direct tap specified by pipe manufacturer. otherwise, use single strap bronze service saddle. See detail 292.06
3. Cone section may be substituted for flat top according to depth.

**1" AIR RELEASE VALVE & MANHOLE  
(PIPE 2" to 12")**