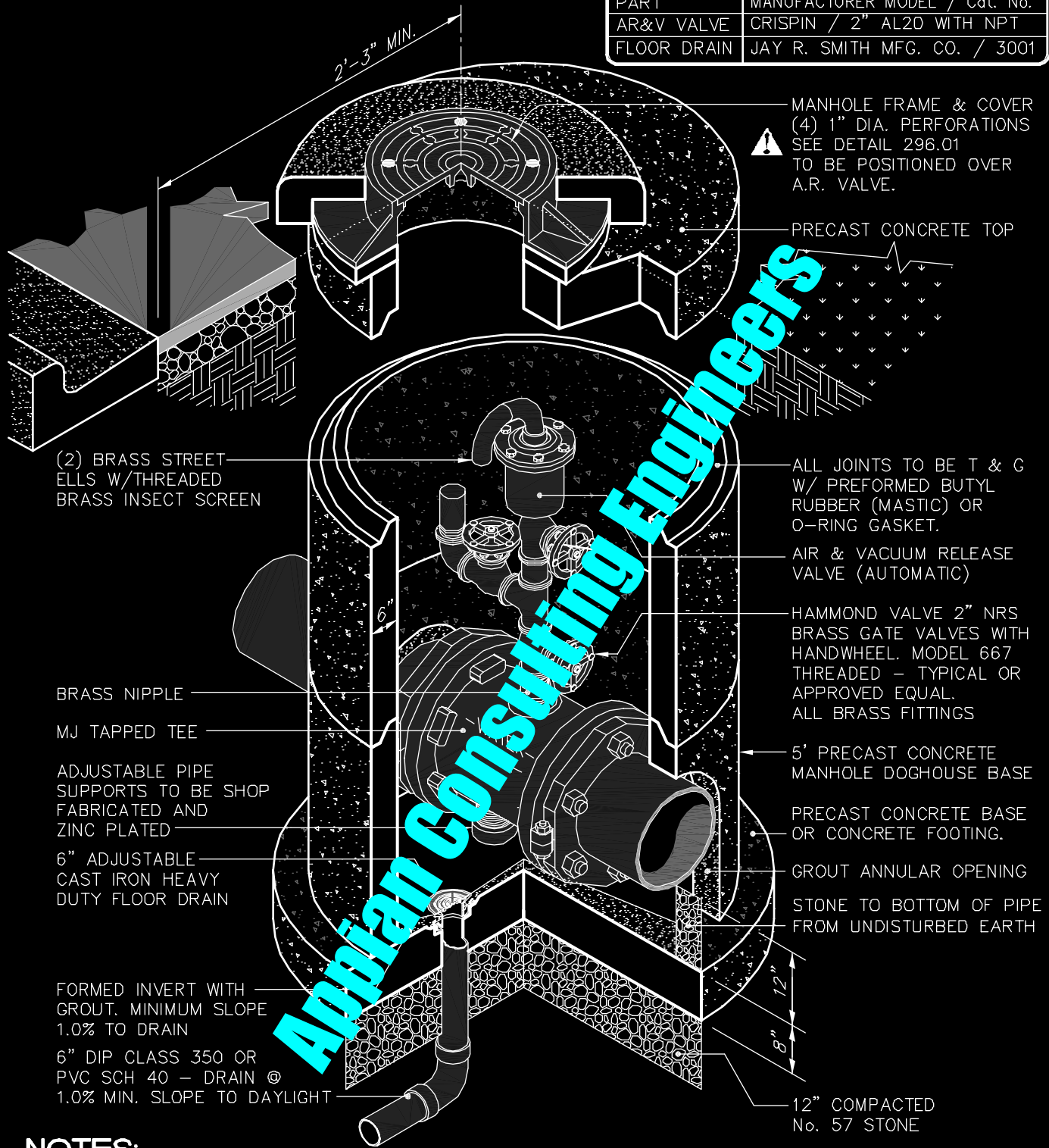


PART	MANUFACTURER MODEL / Cat. No.
AR&V VALVE	CRISPIN / 2" AL2D WITH NPT
FLOOR DRAIN	JAY R. SMITH MFG. CO. / 3001



MANHOLE FRAME & COVER
(4) 1" DIA. PERFORATIONS
SEE DETAIL 296.01
TO BE POSITIONED OVER
A.R. VALVE.

PRECAST CONCRETE TOP

(2) BRASS STREET
ELLS W/THREADED
BRASS INSECT SCREEN

ALL JOINTS TO BE T & C
W/ PREFORMED BUTYL
RUBBER (MASTIC) OR
O-RING GASKET.

AIR & VACUUM RELEASE
VALVE (AUTOMATIC)

BRASS NIPPLE

HAMMOND VALVE 2" NRS
BRASS GATE VALVES WITH
HANDWHEEL. MODEL 667
THREADED - TYPICAL OR
APPROVED EQUAL.
ALL BRASS FITTINGS

MJ TAPPED TEE

5' PRECAST CONCRETE
MANHOLE DOGHOUSE BASE

ADJUSTABLE PIPE
SUPPORTS TO BE SHOP
FABRICATED AND
ZINC PLATED

PRECAST CONCRETE BASE
OR CONCRETE FOOTING.

6" ADJUSTABLE
CAST IRON HEAVY
DUTY FLOOR DRAIN

GROUT ANNULAR OPENING
STONE TO BOTTOM OF PIPE
FROM UNDISTURBED EARTH

FORMED INVERT WITH
GROUT. MINIMUM SLOPE
1.0% TO DRAIN

6" DIP CLASS 350 OR
PVC SCH 40 - DRAIN @
1.0% MIN. SLOPE TO DAYLIGHT

12" COMPACTED
No. 57 STONE

NOTES:

1. Provide a minimum of 3'-6" cover over water line.
2. All pipe fittings to be brass
3. Cone section may be substituted for flat top according to depth.

**2" AIR RELEASE VALVE & MANHOLE
(PIPE 16" and LARGER)**