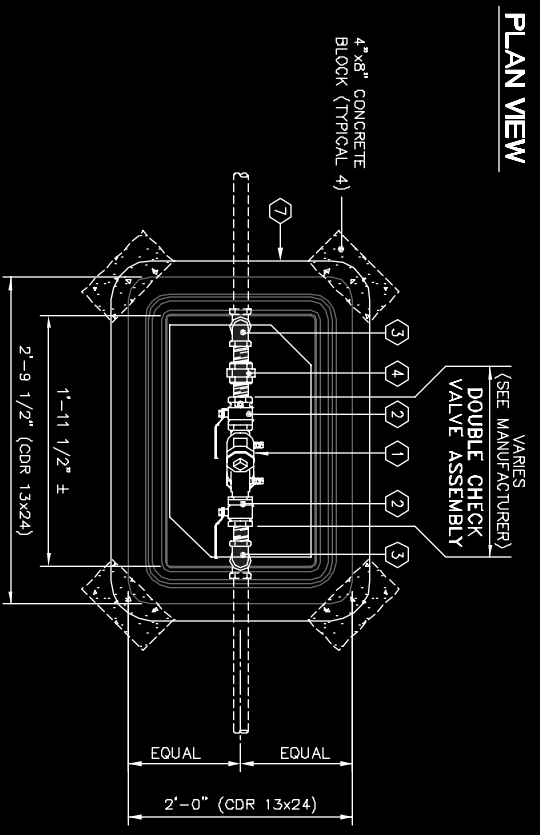


ELEVATION



TYPICAL BOX

3/4" or 1" DCV ASSEMBLY
(ALTERNATE UNDER GROUND BOX)



PLAN VIEW

NO.	PART	MANUFACTURER MODEL / Cat. No.
1	3/4" or 1" DOUBLE CHECK VALVE ASSEMBLY	SEE SPECS. 02900 - PRODUCTS
2	1/2" TURN FULL PORT BRONZE BALL SHUT-OFF VALVE	MILLER SUPPLY Co. / DC-590
3	METER	---
4	4"x8" CONCRETE BLOCK	---
5	1" DIA. BRASS STEEL OR BRASS THREADED PIPE	BRONKS / MEDIUM BOX
6	3/4" or 1" DIA. BRASS STEEL OR BRASS THREADED PIPE	CDR / 1 1/2"x24"
7	METER BOX	MID-STATES PLASTICS INC. / MSBQ1324-12 (OR APPROVED EQUIVALENT)

NOTES:

1. Ensure positive surface grade away from vault.

3/4" or 1" DCV ASSEMBLY
(ALTERNATE UNDER GROUND BOX)

Anjan Consulting Engineers